

Specifications



Seats 2-4



Outdoor



Wood Burning
or Electric
heater

TECHNICAL

Wood: Eastern White Cedar

Shape: House shaped

WARRANTY

Saunas - 5 year limited warranty against defects in materials or workmanship

Heaters - varies for each heater model

What You Need

SAUNA BASE

Ensure the base of your sauna is level. A solid base for your sauna is recommended and can be made from the following:

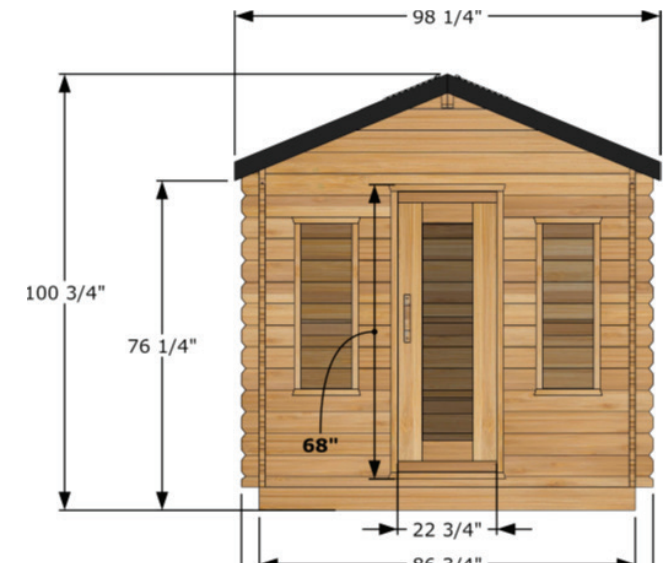
Concrete Pad **Wood Deck** **Patio Stone** **Crushed Stones**

ELECTRICAL

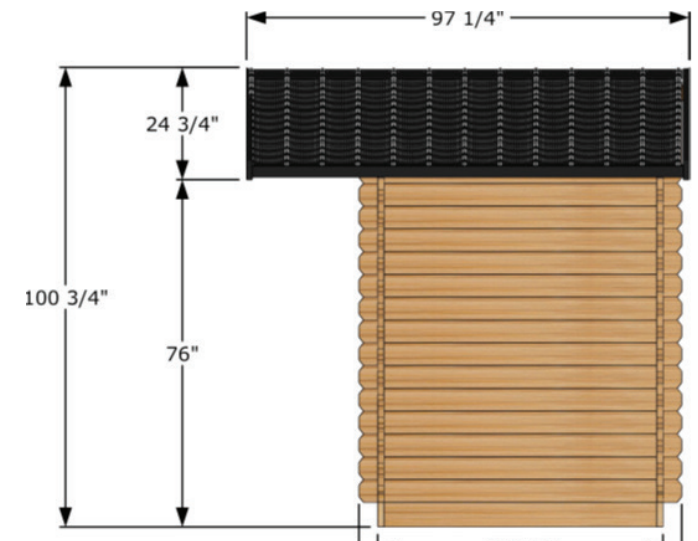
Electrician - Final Electrical hookups must be completed by a certified electrician to ensure proper installation and compliance with local codes. This is essential for safety, performance, and warranty validation.

Requires 240v and 30-50 amp depending on the heater.

Front View (CTC77MN)



Side View (CTC77MN)



Notes

Contact Info

Dimensions

Exterior Depth	81.25"
Exterior Width	82.25"
Exterior Height	84.25"
Interior Depth	50"
Interior Width	70"
Interior Height	72.25"

This classic shed-style sauna with overhang is both timeless and inviting. Thoughtfully handcrafted in Ontario from locally sourced Eastern White Cedar which is known for its lighter natural color and tight refined knots. The cedar creates a rustic appearance while providing excellent resistance to moisture and long term wear.

Product Details & Customizations

100% Canadian Made

Handcrafted in Canada with Canadian wood by local expert artisans.

Premium Eastern White Cedar

Solid stave wood bevels made of Grade A Solid Eastern White Cedar is resistant to rot and decay.

Shed Style Cabin

This style of cabin is timeless and easy on the eyes with lots of space.

Metal Shingle Finished Roof

Premium metal shingle kits made of 28 gauge steel has an engineered paint finish to provide years of protection.

Easy Assembly

This unique sauna is straightforward and easy to assembly.

Made in Canada

